



The Westerly Airport Association  
*presents*



**AVIATION <sup>IN</sup> THE  
GILDED AGE**  
**a unique celebration**



*to benefit the*

Westerly Airport Association's  
**Humphrey J. Amedeo, Jr. Memorial  
Aviation Scholarship Fund**

at the magnificent

**OCEAN HOUSE**

Bluff Avenue, Watch Hill, Rhode Island

**May 2nd, 2012**

6:00 P.M. to 8:30 P.M.

*featuring live music by*

Jennifer Holden, Piano  
*with* Victoria Trogani, Vocals

*and*

Andy Sherwood's Dixieland Band

*Vintage attire optional, but encouraged*

Hors d'œuvres, Cash Bar, Silent Auction

Tickets \$75 per person

RSVP to

*Derek Ferris, Treasurer 401-596-7629*

or reply by mail to

*Westerly Airport Association  
PO Box 2053, Westerly, RI 02891*

*about the cover image...*

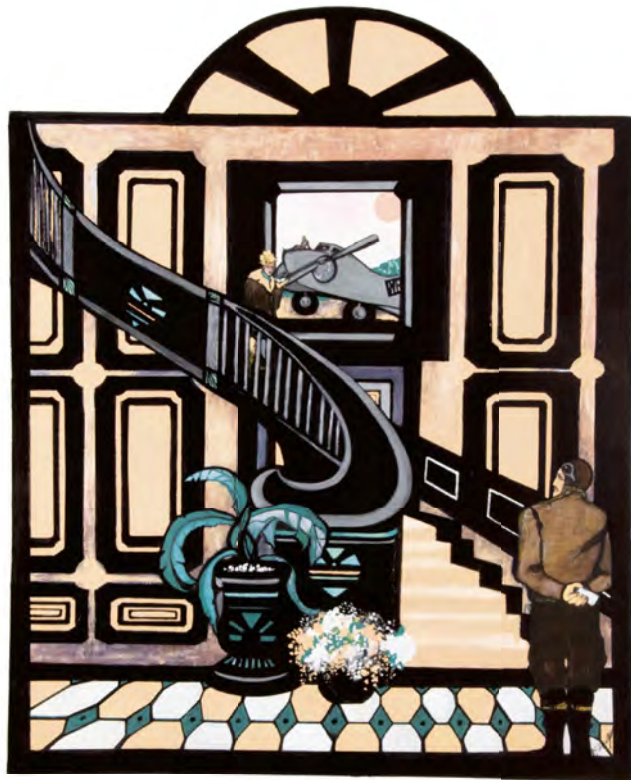
In the dawn and early days of aviation, every flight seemed like a miracle. The Wright Brothers brought flying machines into reality, and a couple of decades later, Air Mail was suddenly making it possible to send a letter in a day or two instead of weeks. Barnstormers landed their fragile craft in farmers' fields, offering the thrill of a lifetime: the novelty of an airplane ride. Pioneers such as Amelia Earhart, Jacqueline Cochran, Glen Curtis, and Wiley Post made headlines for their historic accomplishments and daring escapades.

In May of 1927, Charles Lindbergh completed his historic first Atlantic crossing by air. He departed from a grass airfield on Long Island, and flew northeastward on his Great Circle route toward France.

His "Spirit of St. Louis" monoplane flew over southern Rhode Island on that day. Meanwhile, the beautiful Ocean House would have been waking up for its season as the preferred destination for stylish, summer beach lovers. It may be a little stretch to depict adventure-loving patrons waiting on the porch of the Ocean House to catch a glimpse of Lindy as he headed out that May – but it's no stretch at all to associate the beautiful and venerable hotel with great parties full of happy people during those magical days of aviation's Gilded Age.

Photo courtesy the Ocean House,  
with imagination contributed by Sandy Niles

All rights reserved.



AVIATION <sup>IN</sup> THE  
GILDED AGE



The Westerly Airport Association is delighted to present works of two accomplished local artists at this event. Pieces will be on display in the grand ballroom, and proceeds from sales will be contributed to the Scholarship Fund.



**Elizabeth Gueltzow**, widely known as Bette, has been dabbling with



paint and pens since the age of five where she was found drawing the coronation of Queen Elizabeth on a napkin. She's gone on to take first place at numerous art shows throughout the years. She attended Paier School of Art in New Haven, where she majored in Fashion Illustration and Advertising and graduated with honors (1969). Since then

she has been exhibiting her work in New York, Boston, Los Angeles, and her native state of Rhode Island. Her work boasts of an eclectic group of mediums such as pen and ink, acrylics and pastels with a Deco flair. This postcard features a new work just for this Celebration, depicting Amelia Earhart and her navigator, Fred Noonan, meeting at a grand staircase of the Gilded Age.

**Gregg Gulino** is a photographer's photographer, having served the local



area for decades with professional, creative images of everything from newborns through school portraits, weddings, and commercial work. Aerial photography is a specialty, and Gregg takes full advantage of the beauty of our seacoast communities for his work. Gregg is a graduate of the Rhode Island School of Photography, attended the

New England School of Professional Photography (NEIPP), and served as former staff assistant at the Winona School of Professional Photography. Gregg also taught photography at an adult education level and continues to judge at local camera club organizations. Along with his wife Julie, Gregg offers services in CT, RI and MA out of their studio in Pawcatuck, CT.